



# Installation Instructions

## Stainless Steel Roller Assembly Instructions PR3H Hand Wheel

You are now the proud owner of a quality Sancell Product  
Assembly of your roller is quick and simple, just follow the steps below  
Before you start, ensure that your pool cover has been fitted to your pool correctly

### Tools Required

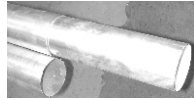
The only tools you will need are:

- A battery drill
- A pair of scissors

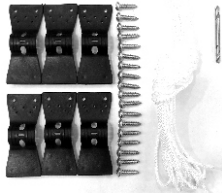
Everything else you will need is supplied

### Contents

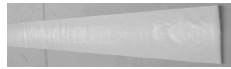
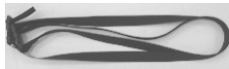
- 2 - 100mm aluminum tubes
- 1 - 95mm x 1m aluminum joiner tube



- 6 - Butterfly clips
- 18 - Stainless steel screws
- 6 - Pieces of cord
- 1 - Drill piece

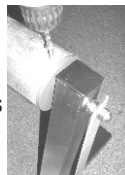


- 2 - Stand ends (1 with wheels)  
Hand wheels attached
- 1 - Protective overcover
- 2 - Straps



### Roller Installation Instructions

1. Slide the 95mm tube into an end of one of the 100mm tubes, so that approximately 500mm of the tube is sticking out
2. Using the supplied drill piece and a battery drill, drill 3 holes evenly around the circumference of the 100mm tube (at the end containing the 95mm tube) and insert screws. Ensure that you have secured the 2 pieces of tube together
3. Now place the other 100mm tube over the other end of the 95mm tube. Butt the two 100mm tubes together and then insert another 3 screws around the circumference of the 100mm tube, again ensuring that the 2 tubes are attached
4. Place the tubes across the width of the pool at one end
5. Position the stand legs into each end of the tubes, pushing the Round bung into each end
6. Then using the supplied drill piece and a battery drill, drill 3 holes evenly around the circumference of the tube 10mm in from the end and insert screws. This will lock the stands in. Repeat on the other end

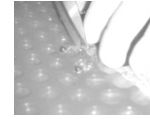
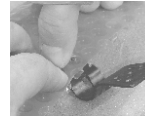
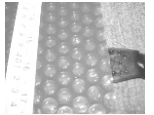


### Useful Roller Tips

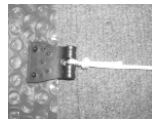
1. When removing your pool cover from the pool, ensure that it rolls up evenly
2. Roll the cover over the top of the roller
3. If your cover has any extra flaps or shapes, fold these areas in before rolling up. This will make removing the cover easier
4. Always use the provided overcover on your pool cover when it is on the roller. This will help prolong the life of your pool cover

### Fixing Your Pool Cover to the Roller

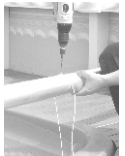
1. Ensure that your roller is evenly positioned at the end of your pool, i.e. The same amount of over hang on each side
2. Pull your pool cover up to the lip of the pool
3. Measuring 400mm in from each end place butterfly clips
4. With the barbs facing upwards push the clip into the pool cover until you can see the barbs poking through. Then using a pair of scissors, make small incisions where you can see the barbs (this helps the barbs through the cover)



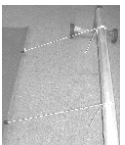
5. Fold the clips over the edge of the cover and apply firm pressure to snap together
6. Add extra butterfly clips along the width of the cover, approx 800mm to 1 meter apart, following the steps 4 & 5
7. Once all of the clips have been positioned, thread a piece of cord through each clip and then tie a tight knot



8. Once cord has been attached to each clip, place each piece of cord over the roller
9. Square each piece of cord to the roller and cover, making sure that each piece of cord is evenly spaced on the roller



10. Drill a hole into the roller where each piece of cord Rests
11. Insert screws into holes, leaving approx 2mm of the head of the screw protruding
12. Tie each piece of cord to the corresponding screw
13. Before tightening the screws, ensure that all of the cords are retrieving the cover evenly from the pool. If not adjust the cord length by wrapping around the screw head
14. When the cover goes onto the roller evenly tighten the screws



**Your Pool Roller and Cover are now ready for use**

### Overcover Installation Instructions

1. Place the over cover over the rolled up cover
2. Cut the overcover to the required size (Over the roller, between the stands) leaving a 100mm overhang
3. Wrap the overcover over the roller (the pool cover should be on the roller) and secure with the straps provided



**If you are missing any of the required contents or having any problems with installation**

**please call *Sancell* on 1800 624 900**

[www.sancell.com.au](http://www.sancell.com.au)